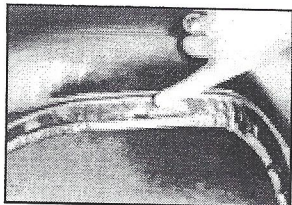


## A-ARM SEALS

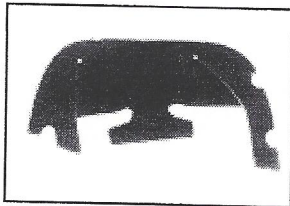
**Q. Does SoffSeal make a seal that will protect my engine compartment?**

**A.** To keep dirt, gravel, water and wind turbulence out of your engine compartment, A-Arm seals are extremely important. New seals also add a detailed look to the under hood area of your car. This is a two-person installation, as outlined below.

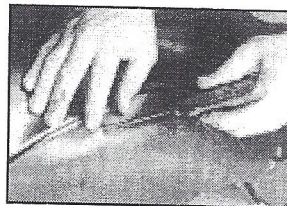
### Installing your new SoffSeal A-Arm Seals



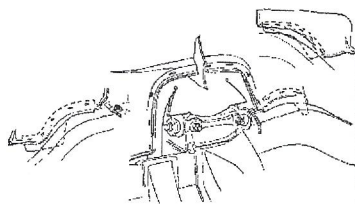
- 1) When using existing inner fenders, you will be able to use the existing staple holes. If not, you'll have to drill new ones.
- » **Note:** inner fenders have a flat area on the underside where the seals attach.



- 2) First, if applicable, install the lower seal.
- » **Note:** SoffSeal seals have a locating notch to help you align them properly with bolts.



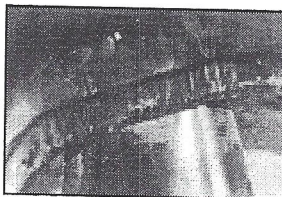
- 3) To help hold the seal in proper position while your partner installs the staples, you may find it useful to insert straight pins through the staple holes. Use a block of wood to hold the seal and prevent finger pricks.



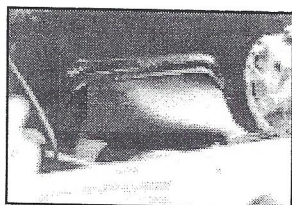
- » **Note:** some seals are fitted into place behind body bolts and washers.



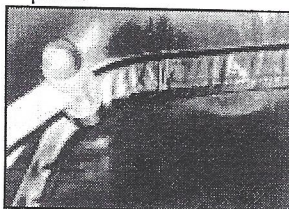
- 4) When the seal is properly located and positioned, have your partner shove the staples through and hold a hammer on the staple while you use another hammer to flatten the staple firmly in place.



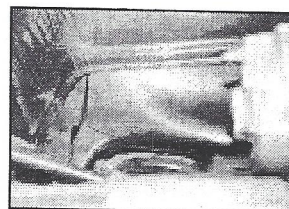
- 5) Now install the main seals in the same manner. In most cases, the inner fender is shaped in such a fashion that will help you position the seal properly.



- » **Note:** the seal fits around the flat area provided on the bottom side of inner fender. In this case the longer end flap goes toward the front of the car.



- 6) As before, your partner will need to hold a hammer or other heavy object on the head of the staple in the engine compartment while you flatten the underside.



- » The new A-Arm seals add a detailed look to your engine compartment.